



## Composite fenders

**FenderTec**  
marine fendering

## COMPOSITE FENDERS



Composite fenders consist of a rubber profile with a wear resistant UHMW-PE coating with a low coefficient of friction. The two materials are connected to each other by means of vulcanisation to form a permanent connection. The rubber profile absorbs energy while the UHMW-PE coating provides low friction and appropriate sliding properties. Composite fenders are suitable for the protection of various types of ships and quays, especially where a bumper is required with a wear-resistant surface with low friction properties.

### Types

FenderTec produces a standard range of composite fenders in block, keyhole and trapezoidal form. The most common dimensions are kept in stock and can therefore be delivered at short notice. Non-standard sizes and customer specific versions can also be produced and delivered with short lead times.

### Processing

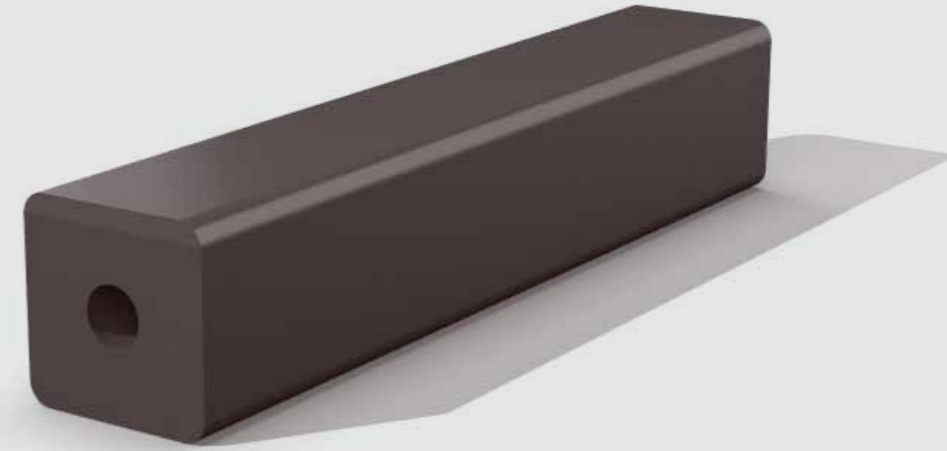
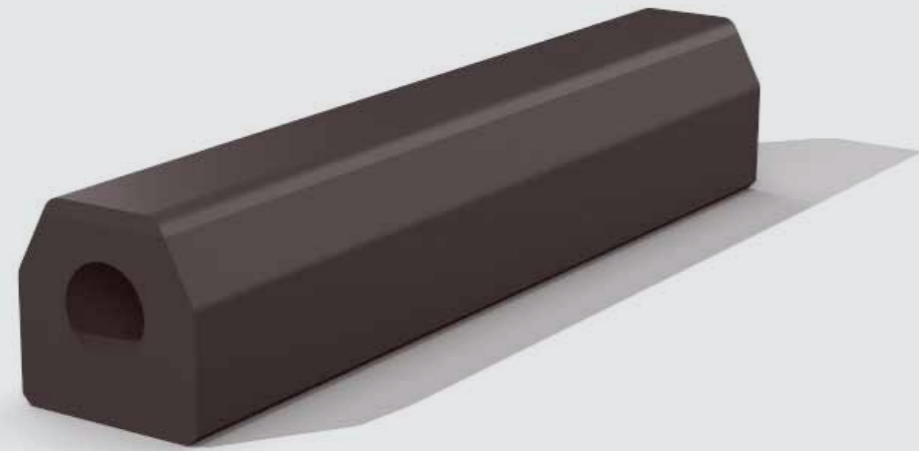
Composite fenders are normally mounted between two strips or in a U-beam. The required mounting holes are made through the side of the fender. Composite fenders can be supplied in any desired length and the ends can be bevelled.

### Applications

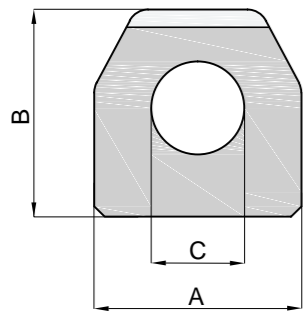
Composite fenders are widely used in various sizes and designs on:

- workboats
- barges
- tugboats
- pontoons
- water locks
- ports
- quays
- piers





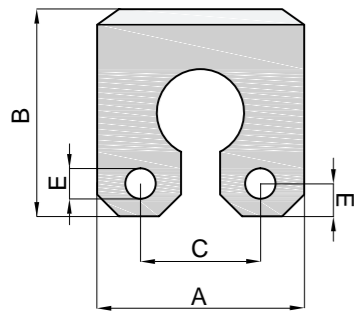
Standard dimensions Trapezium



| A (mm) | B (mm) | C (mm) | Weight (kg/m) |
|--------|--------|--------|---------------|
| 80     | 80     | 42     | 5.4           |
| 100    | 100    | 45     | 8.4           |
| 120    | 120    | 62     | 12.2          |
| 150    | 150    | 73     | 19.7          |

Other non-standard dimensions available on request.

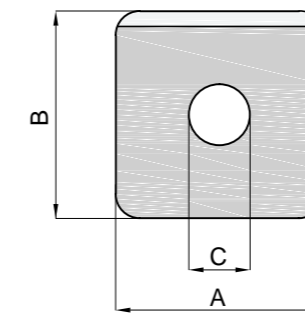
Standard dimensions Keyhole



| A (mm) | B (mm) | C (mm) | D (mm) | E (mm) | Weight (kg/m) |
|--------|--------|--------|--------|--------|---------------|
| 200    | 200    | 130    | 28     | 35     | 30            |
| 250    | 250    | 150    | 33     | 50     | 49            |
| 300    | 300    | 180    | 33     | 60     | 76            |
| 350    | 350    | 210    | 33     | 70     | 109           |

Other non-standard dimensions available on request.

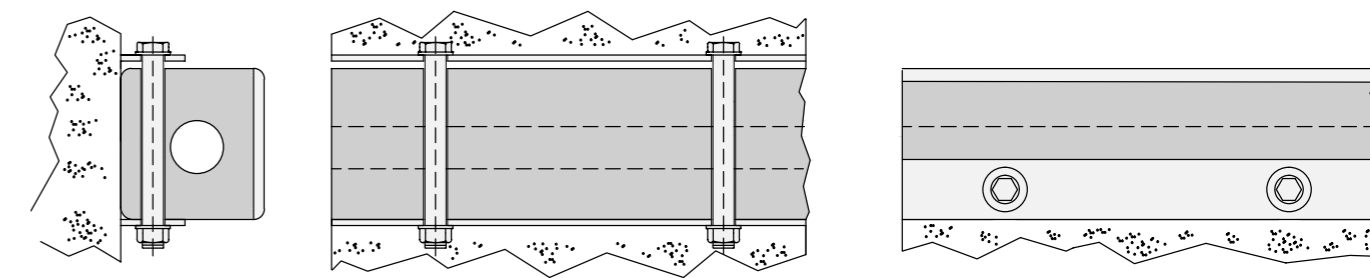
Standard dimensions Block



| A (mm) | B (mm) | C (mm) | Weight (kg/m) |
|--------|--------|--------|---------------|
| 100    | 100    | 30     | 10.3          |
| 150    | 150    | 65     | 21.5          |
| 165    | 125    | 65     | 19.2          |
| 200    | 200    | 75     | 40.2          |
| 200    | 200    | 100    | 36.2          |
| 250    | 250    | 100    | 60.2          |
| 300    | 300    | 125    | 92.1          |

Other non-standard dimensions available on request.

Mounting method



General guidelines for mounting. For reference purposes only.



Your local representative:

